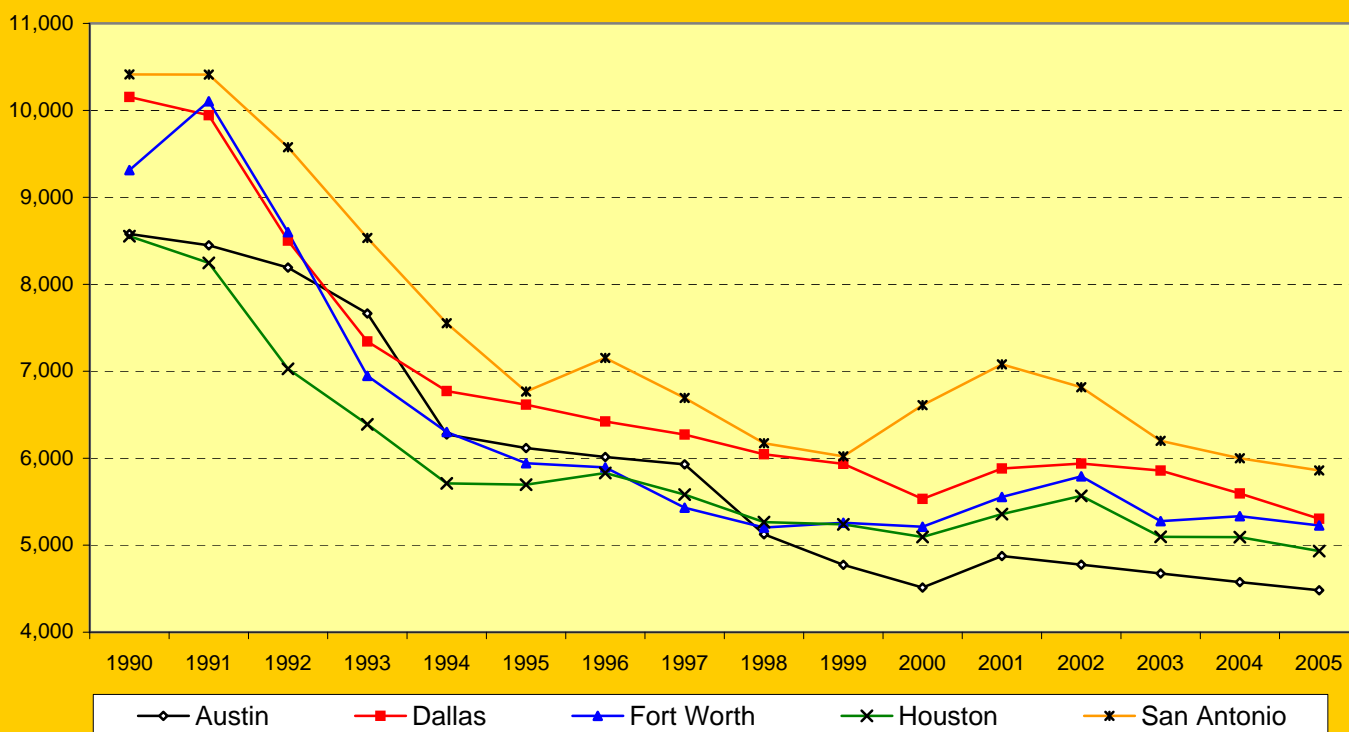


## Crime Rates in Selected Texas Cybercities, 1990-2005\*

(Number of crimes)

(Number of crimes per 100,000 population)



\*Note: Data for Austin for 2003 are estimated. Data for 2003 through 2005 are based on revised definitions of Metropolitan Statistical Areas effective in 2003; therefore, data for 2003, 2004 and 2005 are not necessarily comparable to previous years.

Austin - Austin-Round Rock MSA (Metropolitan Statistical Area)

Dallas - Dallas MSA

Fort Worth - Fort Worth-Arlington MSA

Houston - Houston MSA

San Antonio - San Antonio MSA

The data shown in this table are based on the REVISED definitions of Metropolitan Divisions and Metropolitan Statistical Areas as defined by the Office of Management and Budget in 2003. For a list of the component counties in metropolitan areas, go to "Component Counties of Texas Metropolitan Areas..." in the Texas Cybercities section of the Austin Index (<http://www.ic2.utexas.edu/bbr/texas-cybercities/texas-cybercities.html>)

Source:

Bureau of Business Research, IC<sup>2</sup> Institute, The University of Texas at Austin

<http://www.ic2.utexas.edu/bbr>

Updated: June 2007

Next update: June 2008

AUSTIN



INDEX