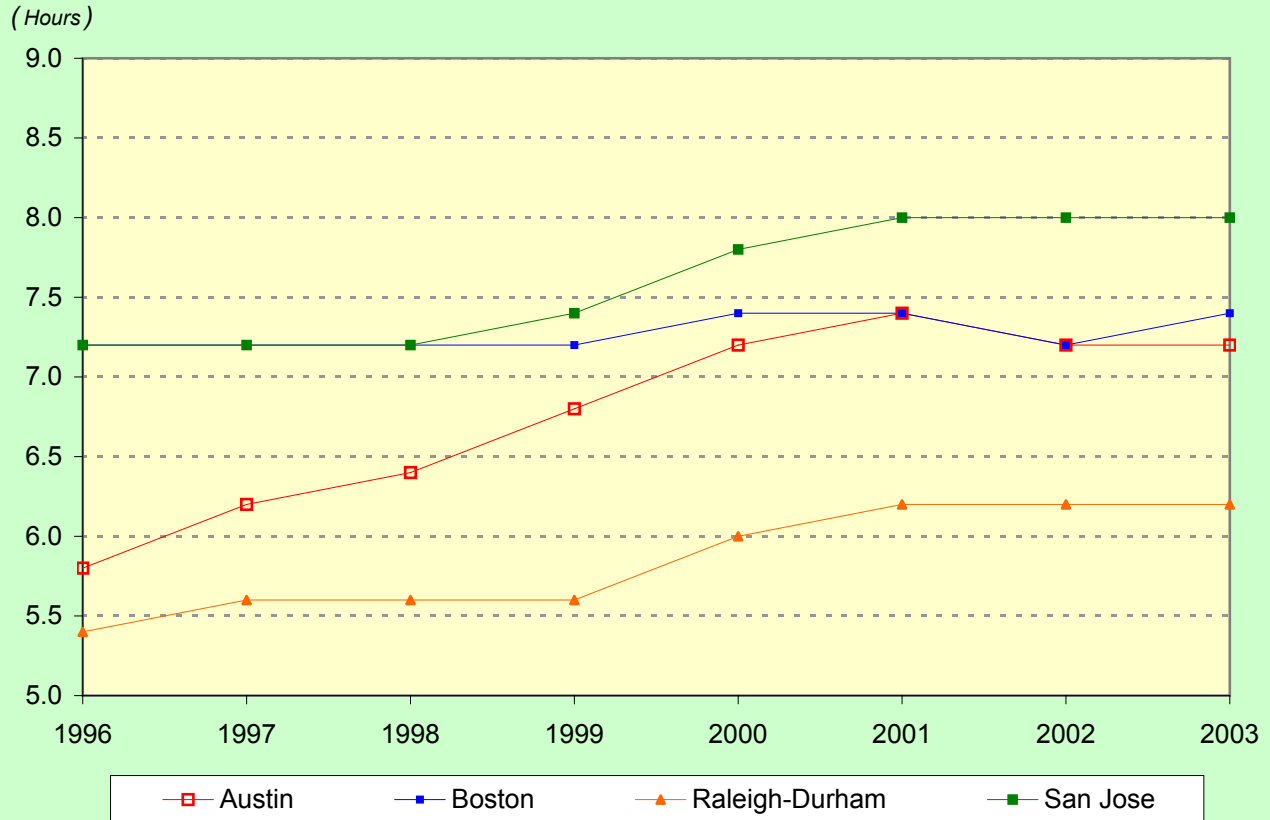


Number of Rush Hours for Selected High-Tech Cities, 1996-2003



Note: The number of rush hours is an estimate of the number of hours in a 24-hour day when the highway system has congestion.

Source:

Bureau of Business Research, IC² Institute, The University of Texas at Austin
<http://bbr.icc.utexas.edu>

Updated: August 19, 2005

Next update: August 2006

AUSTIN



INDEX