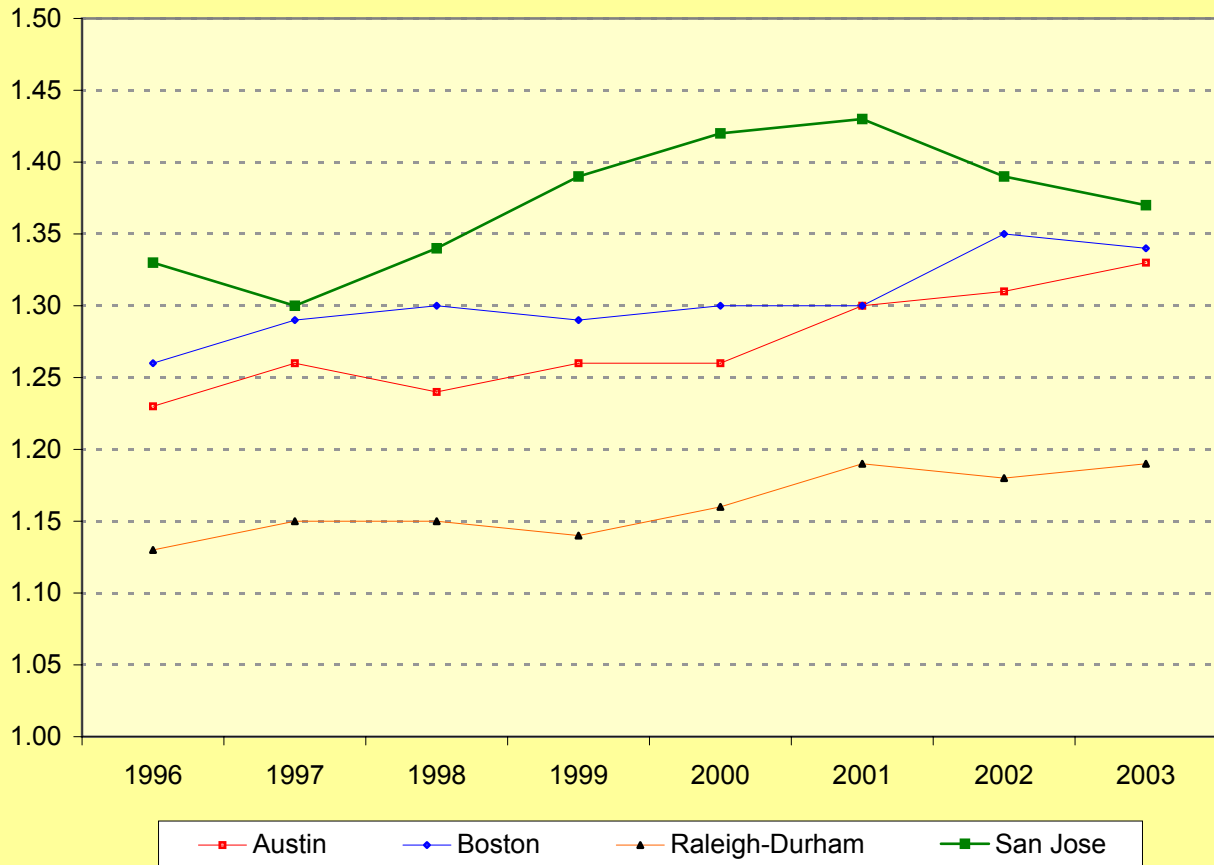


Travel Time Index, Selected High-Tech Cities, 1996-2003

(Index)



Note: The Travel Time Index (TTI) is the ratio of rush hours (peak period travel time) to non-rush hours (free-flow travel time.) The TTI estimates the average amount of *extra* time it takes to travel a specific distance in rush hours compared to non-rush hours. Non-rush hour speed is estimated at 60 mph on freeways and 35 mph on major streets. Speeds less than that are an indication of delay.

Source:

Bureau of Business Research, IC² Institute, The University of Texas at Austin
<http://bbr.icc.utexas.edu>

Updated: August 19, 2005

Next update: August 2006

A U S T I N



I N D E X