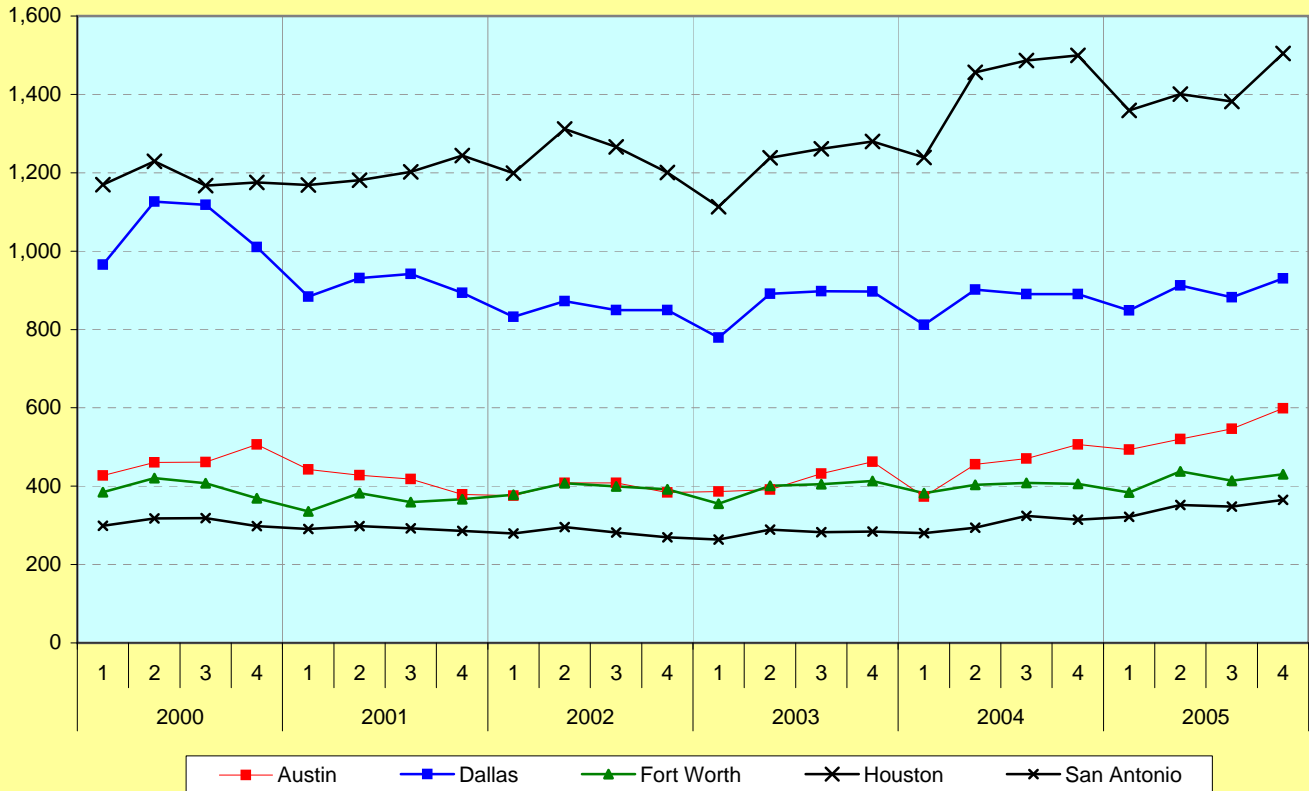


**Wholesale Sales
Subject to Texas Sales Tax
in Selected Texas Cybercities, 2000-2005**
(in 3rd quarter 2000 dollars)

(in millions of dollars)



Austin - Austin-Round Rock MSA
 Dallas - Dallas-Plano-Irving MSA
 Fort Worth - Fort Worth-Arlington MSA
 Houston - Houston-Sugar Land-Baytown MSA
 San Antonio - San Antonio MSA

Notes:

The data shown in this table are based on the REVISED definitions of Metropolitan Divisions and Metropolitan Statistical Areas as defined by the Office of Management and Budget in 2003. For a list of the component counties in metropolitan areas, go to "Component Counties of Texas Metropolitan Areas..." in the Texas Cybercities section of the Austin Index (<http://www.ic2.utexas.edu/bbr/texas-cybercities/texas-cybercities.html>)

Compiled by:
 Bureau of Business Research, IC² Institute, The University of Texas at Austin.
<http://www.ic2.utexas.edu/bbr>

Updated: August 2006
 Next update: August 2007

A U S T I N



I N D E X