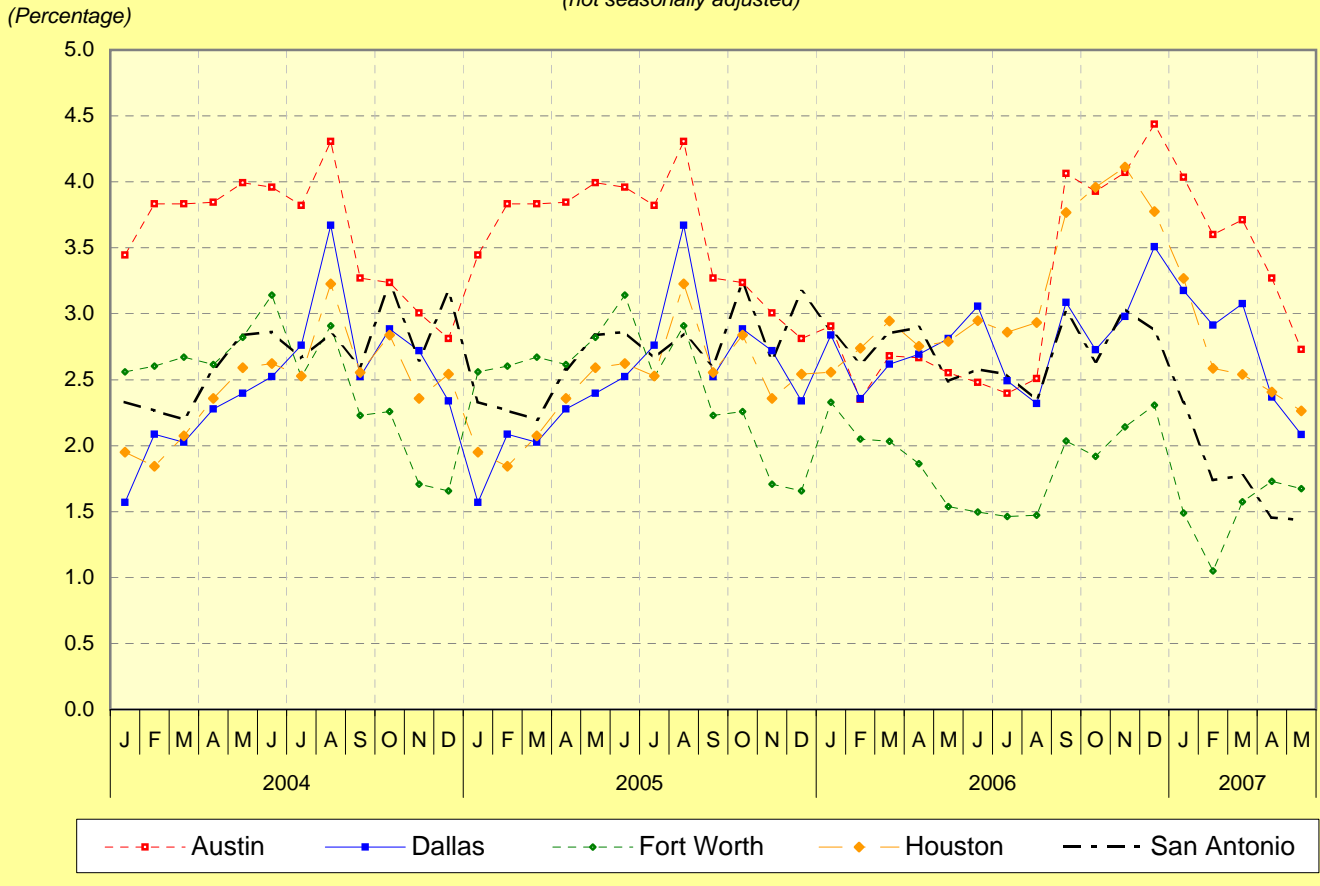


**Percentage Change in Total Employment*
from Same Period in Previous Year
in Selected Texas Metropolitan Areas, 2004-2007**
(not seasonally adjusted)



Austin - Austin-Round Rock, TX Metropolitan Statistical Area (MSA)

Dallas - Dallas-Plano-Irving, TX Metropolitan Division (MD)

Fort Worth - Fort Worth-Arlington, TX MD

Houston - Houston-Baytown-Sugar Land, TX MSA

San Antonio - San Antonio, TX MSA

Notes:

The employment data shown in this table are based on the REVISED definitions of Metropolitan Divisions and Metropolitan Statistical Areas as defined by the Office of Management and Budget in 2003. For a list of the component counties in metropolitan areas, go to "Component Counties of Texas Metropolitan Areas..." in the Texas Cybercities section of the Austin Index (<http://www.ic2.utexas.edu/bbr/texas-cybercities/texas-cybercities.html>)

*Total employment includes self-employed persons and agricultural workers.

Source: Bureau of Business Research, IC² Institute, The University of Texas at Austin.
<http://www.ic2.utexas.edu/bbr>

Updated: June 27, 2007
Next update: August 2007

A U S T I N



I N D E X